



The Parish Pen



The official newsletter of Glenfield Parish Council
Park House, Stamford Street, Glenfield, Leicester, LE3 8DL
Email – glenfieldpc@btconnect.com
www.leicestershireparishcouncils.org
Tel: 0116 231 2498

Issue – 17

June 2007

At this year's Annual Meeting I was elected as Chairman of the Parish Council to serve for the ensuing year. I consider it an honour and a privilege to be asked to hold this office and to continue the work done by our retiring Chairman, Tony Greenwood. I would like to thank Tony for all his hard work and efforts he has given during his year in office and will try to emulate his success in all areas of council life.

As a Parish Council we have a newly elected and energized team of councillors who are from diverse backgrounds and bring with them a wide range of skills and views to ensure we offer best advice, opinion and comment to all council matters. You are all able to contact your councillors through the office and discuss concerns and matters you have as parishioners, allowing these to be brought to council's attention.

As a villager, I am passionate about Glenfield and will ensure that the focus on all areas of village life and provision of services and facilities for the parishioners of Glenfield are maintained. We are constantly looking at opportunities to add to village life and will ensure that you are represented as a village at District and County level in all areas of potential developments and growth, as well as highlighting concerns and problems we face.

I look forward to working with you all.

Lee Breckon JP, Chairman

Your Council

As a result of the 3 May 2007 elections and the co-optation of one councillor at the Annual Meeting of the Parish Council on 14 May 2007, Glenfield is served by the following councillors:



Central Ward – L Adlam, P Lowe.
Faire Ward – T Abbott, R Boby, J Garratt.
Glenfrith Ward – R Denney, E Hudson.
Manor Farm Ward – L Breckon, J Peachey.
North Ward – H Eppel, A Greenwood, J Springthorpe.
Stone Ward – N Cox, B Merrell, M Neal, K Russell.

Elected at the Annual Meeting for the year 2007/8 are:
Chair of Council - Lee Breckon
Vice-Chair of Council - Lynn Adlam
Community Committee – Chair Nick Cox, Vice-Chair Jack Garratt
Property Committee – Chair John Springthorpe, Vice-Chair Thelma Abbott.

Glenfield is now split into 6 wards with councillors representing individual wards and Glenfield as a whole. There are still five vacancies on the Parish Council.
Central Ward -2.
Glenfrith Ward – 1.
Manor Farm Ward -2.

If you are interested in joining the Parish Council then please contact the Clerk to the Parish Council at the address above.

Meetings of the Full Parish Council take place on the third Monday of each month at 7:30 pm at Park House. Members of the public and press are welcome.

At the Annual Meeting of the Parish Council decisions were made to continue to be involved with other agencies, with representatives or observers on no less than eleven organisations. The Parish Council also decided to continue its financial support for Glenwatch, Glenfield's Neighbourhood Watch scheme, and for the provision of youth leaders at Glenfield's Youth Centre on Station Road.

Glenfield Parish Council has adopted the Code of Conduct as defined in The Local Authorities (Model Code of Conduct) Order 2007.

Annual Parish Meeting 2007

32 people attended the Glenfield Annual Parish Meeting, which took place on 23 April 2007. Lively discussions took place on several issues. Zoe Royal, one of Glenfield's Youth Leaders, reported that the Youth Centre was going from strength to strength, with membership numbers growing and consideration was being given to opening the centre on a further day each week. The minutes of this meeting can be found on our web site.

The Glenfield Youth Centre is situated next to the Co-op car park on Station Road and is open on Mondays – junior club: yr 7/8/9 (6–8pm) and Tuesdays – senior club: yr 10+ (7-9pm)

Policing

PC Mike Cawley (1868) and Police Community Support Officer Peter Chapman (6508), Glenfield’s Neighbourhood Police Team, are now well established in their office on Ellis Park and are keeping an even closer eye on the village.

Regretfully, several properties in the Glenfield Frith Drive area of the village have been targeted for break-ins to their sheds. A considerable amount of equipment has been taken and all residents are asked to be extra vigilant at this time of year.

Part of the Parish Council’s web site has been dedicated to the Neighbourhood Police Team. The web provides details of the team, alerts over specific potential crimes and information about how to contact the team. The Neighbourhood police Team are holding open surgeries for residents and dates and times are published on the web. There is also a form that you can complete that will be emailed directly to both PC Cawley and PCSO Chapman. You can use this form to gain advice and to provide help to the team.

There has been some misuse of the Parish Council’s sports ground and parks by youths on scooters. Riders and their parents are advised that when caught the scooters may be confiscated. Under-age persons found with alcoholic drinks may also have their goods confiscated.

For more information go to the Parish Council’s web site and select Neighbourhood Policing Team from the left hand column of options.

Voluntary Action

Voluntary Action Blaby District was successfully launched on 1st April 2007 following the amalgamation of the Council for Voluntary Service (CVS) for Blaby District with the District’s Volunteer Centre.

Voluntary Action has many varied roles for volunteers in Glenfield and across the district so if you have a few hours to spare please do contact us to find out more. Our Community Transport (Social Car Scheme) is becoming more and more popular and so we always welcome new drivers to join us. Volunteer drivers take people to a number of places, i.e. shopping trips, lunch clubs and social events as well as health appointments (but not hospital appointments).

The only cost to the volunteer is their time and any time given on any day of the week is extremely helpful to us. People really appreciate the Community Transport. One said, “A very big thank you for this service because it has made such a big difference to my life now I can get out and see friends again and go to different places, otherwise I would get nowhere, so thank you again”.

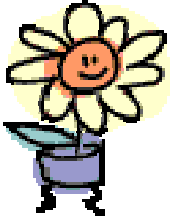
Volunteer drivers, say, “you make new friends”, hear funny stories” and “have lots of laughs”. So if you are a car owner and have a few hours to spare do get in touch.

Drivers are reimbursed for every mile they travel using their own car when driving for the project.

For information on this and other volunteering vacancies please contact Yvonne Dudley, Volunteer Organiser, Voluntary Action Blaby District, Parker House, 254 Braunstone Lane, Leicester LE3 3AS.Telephone: 0116 2238338 email: volunteer@vabd.org.uk

Garden Competition 2007

The Parish Council instituted these awards some years ago to encourage a brighter and more attractive Glenfield. Gardens are judged on what can be seen as people walk by. Back gardens are not included.



Judges will look at all recommended gardens during July of this year and select the winners. Commended and Highly Commended certificates are sent out in the post with the major prizes being presented at the Glenfield Gardeners’ Show on the 18 August 2007.

If you would like your front garden, your neighbour’s garden or any other garden to be considered by the judges please fill in the address on the slip below and send it to “Glenfield Garden Competition, Glenfield Parish Council, Park House, Stamford Street, Glenfield, Leicester, LE3 8DL”, by 30 June 2007.

Local businesses are particularly invited to take part in the competition, so please brighten up the village and drop us a line to make sure we visit your premises.

✂ -----

Please consider the following address(es) in the 2007 Glenfield Garden Competition.

✂ -----

And Finally

We ask all residents who have hedges to the boundary of their properties to take due care to ensure that any growth does not impede the use of public footpaths, including the use by those with pushchairs or prams or those who need to use any form of disability vehicle.